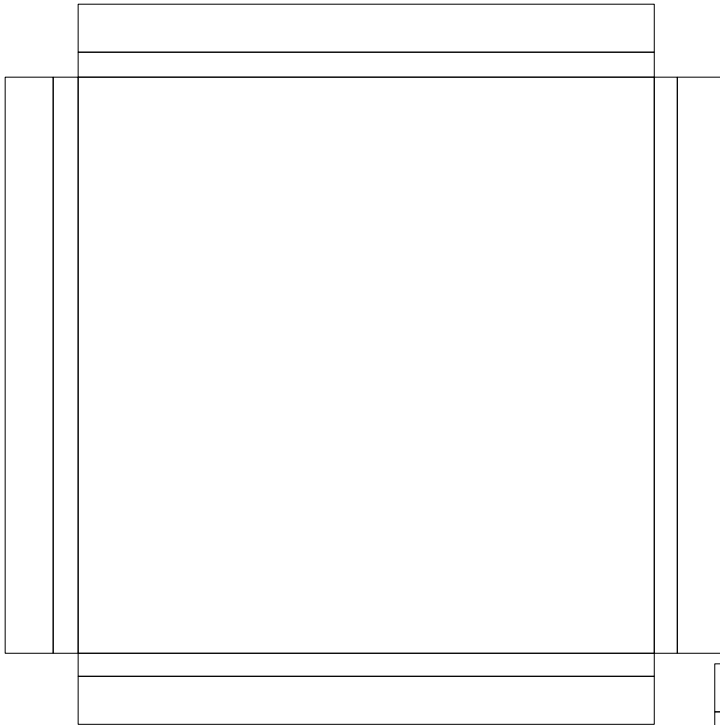


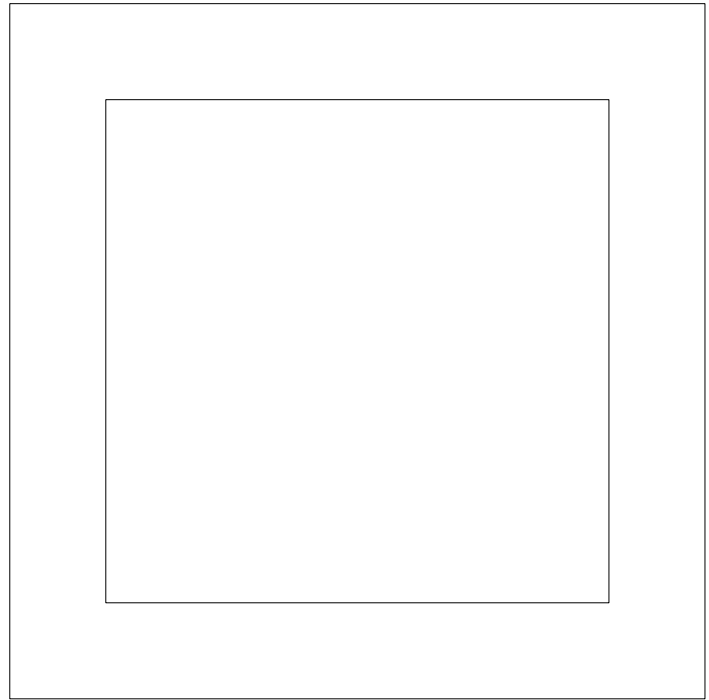
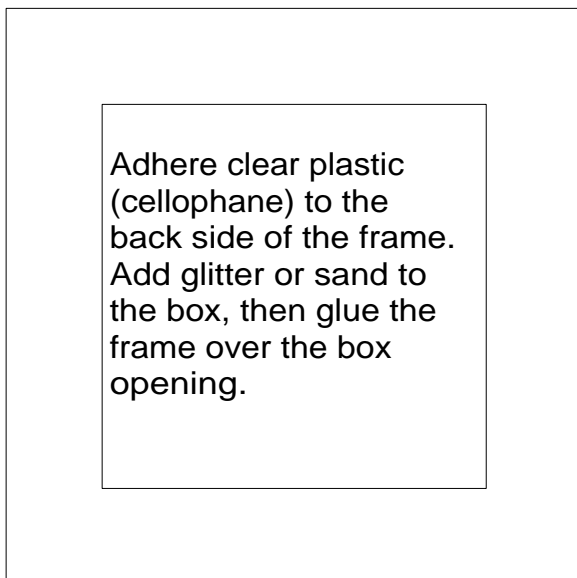
# Shaker Cards

Box: Stamp or print an image on the background  
Cut around outside. Score and fold  
in on solid lines. Apply 1/8" thick double-  
sided tape (no more than 1/2" wide)  
around the inside edge and fold the walls  
up and over it.

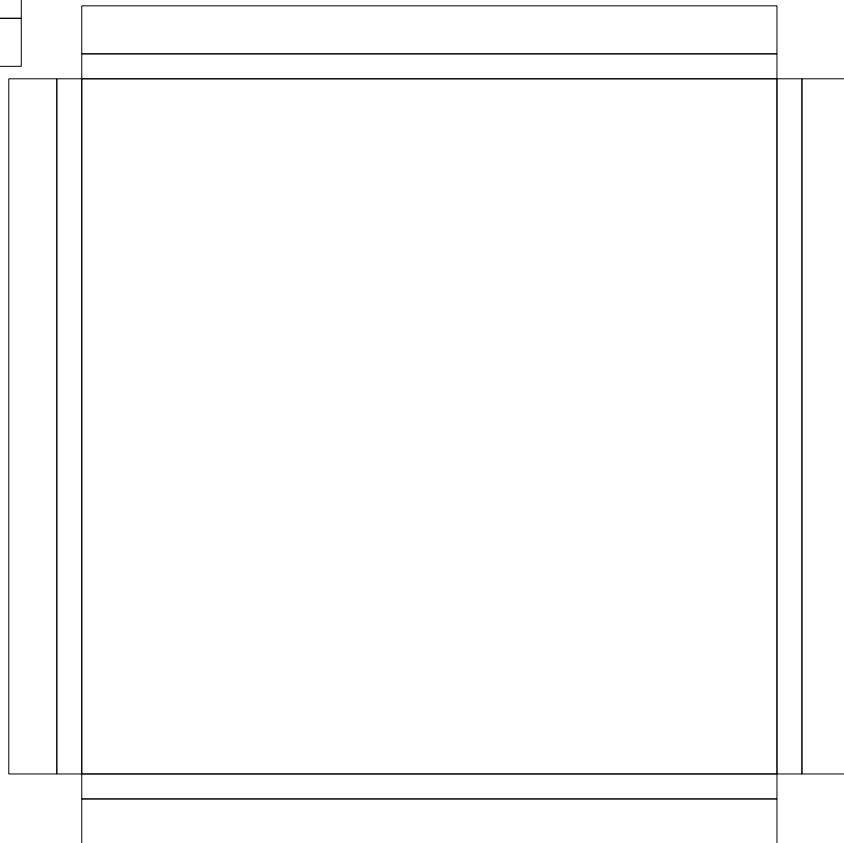


3"

Frame: cut around outside  
and cut out center square



3.5"



©2008 Judy Headrick  
jheadric@msn.com

[www.cardsandcrafts.freeservers.com](http://www.cardsandcrafts.freeservers.com)  
[www.handcraftedgreetings.com](http://www.handcraftedgreetings.com)